



Rabbit anti Keratin 8 Polyclonal Antibody

Alternative Name(s): CK-8; cytokeratin 8; KRT8

Order Information

- **Description:** Cytokeratin 8
- **Catalogue:** 500-3264
- **Lot:** See label
- **Size:** 100ug/200ul
- **Host:** Rabbit
- **Clone:** nan
- **Application:** IHC(P), WB
- **Reactivity:** Hu

ANTIGEN PREPARATION

A synthetic peptide corresponding to the C-terminus of Cytokeratin 8

BACKGROUND

CK8, cytokeratin 8, belongs to the type II keratin family, Cytokeratins play a critical role in differentiation and tissue specialization and function to maintain the overall structural integrity of epithelial cells. They have been found to be useful markers of tissue differentiation, which is directly applicable to the characterization of malignant tumors. Cytokeratin 8 expression is seen in epithelium and epithelium-derived tumors. The Cytokeratin 8 and 18 pair are normally expressed in simple epithelia, but not in stratified epithelial cells. Research indicates that squamous cell carcinomas derived from stratified epithelia show abnormal expression of Cytokeratin 8 and 18, although it is not known whether these proteins contribute to the malignant phenotype of the cells. Expression of Cytokeratin 8 and 18 in oral squamous cell carcinomas is an independent prognostic marker that indicates a poor prognosis. Cytokeratin 8 expression correlates with malignancy in leukoplakia and carcinomas of the head and neck; it is expressed in all non-small-cell lung cancers. High CK8 expression independently predicts poor prognosis for lung adenocarcinoma patients. Thus CK8 represent valuable targets for therapy.

PURIFICATION

The Rabbit IgG is purified by Epitope Affinity Purification

FORMULATION

This affinity purified antibody is supplied in sterile Phosphatebuffered saline (pH7.2) containing antibody stabilizer

SPECIFICITY

This antibody recognizes human Cytokeratin 8. The other species not tested.

STORAGE

The antibodies are stable for 24 months from date of receipt when stored at -20°C to -70°C . The antibodies can be stored at 2°C - 8°C for three month without detectable loss of activity. Avoid repeated freezing-thawing cycles.

APPLICATIONS/SUGGESTED WORKING DILUTIONS*

- Western Blot: 0.1-1 $\mu\text{g/ml}$
- ELISA: 0.01-0.1 $\mu\text{g/ml}$
- Immunoprecipitation: 2-5 $\mu\text{g/ml}$
- IHC: 2-10 $\mu\text{g/ml}$
- Flow cytometry: Not tested
- Molecular Weight: 52.5
- Positive Control: Kidney Tissue
- Cellular Location: Cell Membrane

FOR RESEARCH USE ONLY.

AbboMax, Inc 2528 Qume Drive, Suite 8, San Jose, California 95131, USA
1 408-573-1898 (Tel). 1 408-573-1858 (Fax). www.abbomax.com info@abbomax.com

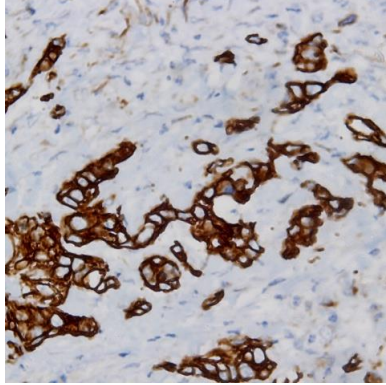


*Optimal dilutions should be determined by researchers for the specific applications.

FOR RESEARCH USE ONLY.

AbboMax, Inc 2528 Qume Drive, Suite 8, San Jose, California 95131, USA
1 408-573-1898 (Tel). 1 408-573-1858 (Fax). www.abbomax.com info@abbomax.com

DATA ATTACHMENTS



Immunohistochemistry: Human Breast carcinoma (FFPE) stained with Rabbit anti-CK8 (Cat# 500-3264) at 1:200 for 10 min @ RT. Staining of formalin-fixed tissue requires boiling tissue sections in 10 mM Citrate Buffer, pH 6.0 for 10 min followed by cooling at RT for 20 min.

REFERENCES

FOR RESEARCH USE ONLY.